

CORPORATE MEMBERSHIP

BE A PART OF THE LEGACY!

Brucemore's history is inescapably linked to the corporate leadership of eastern Iowa. The families of Brucemore helped build the city through industry, philanthropy, and support of the arts. Their home reflects a business community that invests in a vibrant and resilient region.

Brucemore Corporate Members demonstrate that same entrepreneurial and philanthropic spirit. An investment in Brucemore preserves our heritage and promotes pride in our community.

LEVELS/BENEFITS

- Corporate Donor (\$250)** – Level includes rental privileges for business-related meetings in designated conference spaces of the estate.
- Corporate Benefactor (\$500)** – Level includes privileges of Corporate Donors, plus corporate event rental privileges of the Mansion, Garden House, Visitor Center, grounds, and other designated spaces, as well as tour and event passes at the rate of 1:\$50 of giving. Passes may be shared with employees, clients, and associates.
- Corporate Trustees Club (\$1,000)** – Level includes all of the privileges of previous levels, special recognition on the Trustees Club plaque, plus a behind-the-scenes tour and luncheon for up to 15 people with the Executive Director (subject to availability).
- The George and Irene Douglas Circle (\$2,500)** – Level includes all of the privileges of previous levels, plus one complimentary business-related meeting in designated conference spaces for up to four hours (\$400 value, subject to capacity and availability).
- The Howard and Margaret Hall Heritage Club (\$5,000)** – Level includes all of the privileges of previous levels, plus one complimentary corporate event in the Mansion, Visitor Center, grounds, or other designated spaces for up to four hours (\$1,000 value, subject to capacity and availability).

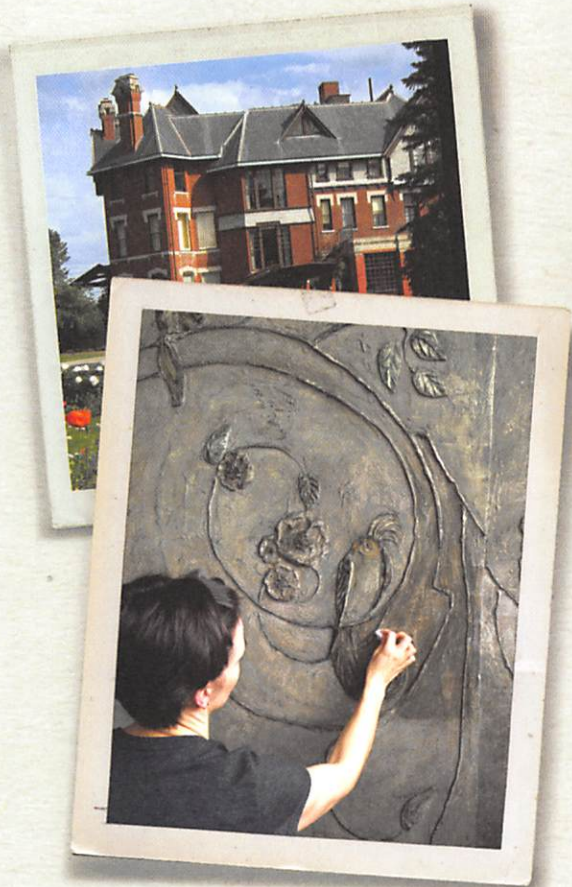
NAME _____

ADDRESS _____

CITY _____ STATE _____ ZIP _____

PHONE _____

E-MAIL _____



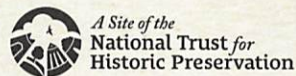
THE NEED

Preserving and sharing this remarkable estate requires substantial financial resources. Annual preservation projects and ongoing maintenance necessitate significant capital investment. A vibrant menu of annual programs, events, and community celebrations encourage broad access through low ticket prices. Brucemore's Membership Program provides essential support to these efforts.

THE BRUCEMORE MISSION

To engage the public in the history, traditions, resources, and on-going preservation of Brucemore for the enrichment of the community.

2160 Linden Dr. SE • Cedar Rapids, Iowa
brucemore.org • 319-362-7375



IMAGINE

HAVING TO IMAGINE IT.

PRESERVE THE LEGACY
THROUGH MEMBERSHIP.



PLEASE MAKE CHECKS PAYABLE TO: BRUCEMORE, INC.
MAIL TO: 2160 LINDEN DR. SE, CEDAR RAPIDS, IA 52403
JOIN ONLINE: BRUCEMORE.ORG

THE SITE

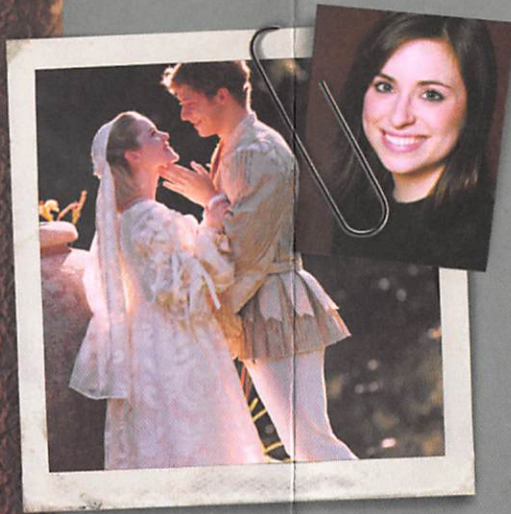
Brucemore is a 26-acre estate with six historic structures, including a Queen Anne mansion completed in 1886. The gardens and grounds reflect an early twentieth century landscape design. The Sinclair, Douglas, and Hall families owned the estate in succession. They were business, cultural, and philanthropic leaders who helped build their community.

THE LEGACY

Today, Brucemore, Inc. preserves the site as evidence of the past and as a unique resource for thousands of visitors. Brucemore is the setting for a wide variety of popular tours, exhibits, theater, concerts, and community events.

THE IMPACT

Brucemore enhances visitors' understanding of their history and appreciation for the region. By preserving its legacy and serving broad audiences with creative programs, Brucemore strengthens our community and promotes a sense of place. Brucemore is both an irreplaceable reminder of our past and a vibrant part of our present.



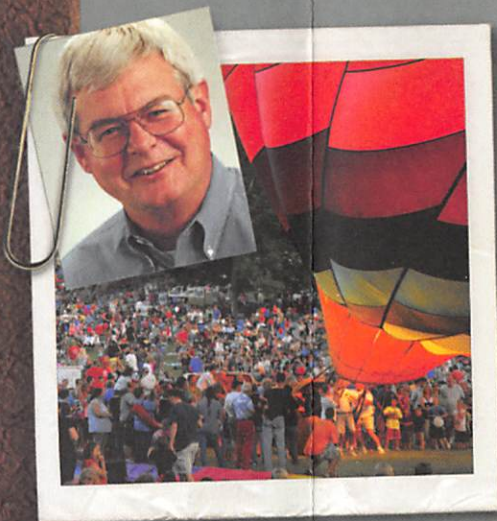
Angela Billman
Actress,
BruceMere Member

"When I was 14 years old, my family took me to the Classics at Brucemore to see Romeo and Juliet. The experience introduced me to Shakespeare, outdoor theater, and inspired me to become an actress. The estate enriches the community in so many ways and inspires people every day."



Cindy Dvorak
Volunteer Tour Guide,
BruceMere Member

"My first experience with Brucemore in the 1980s left me wanting to volunteer. To this day, being a school tour guide gives me great joy, seeing the faces of children light up while listening to the families' stories for the very first time. Brucemore is a wonderful way to share the past."



DICK MARETT
NEIGHBOR,
BRUCEMERE MEMBER

"My wife and I have the good fortune of living within walking distance of the estate. Brucemore is a vibrant, living member of the community rather than a stuffy museum. Our membership was inspired by taking the Nooks and Crannies Tour, a rare look at the Mansion. This tour is only one example of the quality and breadth of programming that Brucemore offers our community."

PERSONAL MEMBERSHIP

BECOME A MEMBER TODAY!

- Special rates for Brucemore events and specialty tours
- Special discounts in the Brucemore Store
- Invitations to members-only events
- Complimentary standard Mansion tours
- *Lion's Roar* newsletter
- Recognition in the annual report and summer events playbill

LEVELS/BENEFITS

- Student (\$35)** - Benefits extend to a college, university, or secondary school student.
- Individual (\$50)** - Benefits extend to an individual.
- Grandparent (\$60)** - Benefits extend to up to two adults of the same household and their grandchildren under the age of 18.
- Household (\$75)** - Benefits extend to members of the same household.
- Patron (\$100)** - Benefits extend to members of the same household, plus one complimentary, standard Mansion tour for up to four additional guests.
- Donor (\$250)** - Benefits extend to members of the same household, plus one complimentary, standard Mansion tour for up to eight additional guests.
- Benefactor (\$500)** - Same benefits as the Donor level, plus an invitation to the annual Trustees reception.
- Trustees Club (\$1,000)** - Same benefits as the Benefactor level, plus special recognition and a personalized tour of the Mansion and grounds with the Executive Director for up to four guests.
- The George and Irene Douglas Circle (\$2,500)** - Same benefits as the Trustees Club level, plus a personalized tour of the Mansion and grounds with the Executive Director for up to eight guests.

NAME _____

ADDRESS _____

CITY _____ STATE _____ ZIP _____

PHONE _____

E-MAIL _____

- Check here for a joint membership in the National Trust for Historic Preservation for an additional \$5. This special offer includes a subscription to the National Trust's Preservation magazine and free or discounted admission to other National Trust Historic Sites.

PLEASE MAKE CHECKS PAYABLE TO: BRUCEMERE, INC.
MAIL TO: 2160 LINDEN DR. SE, CEDAR RAPIDS, IA 52403
JOIN ONLINE: BRUCEMERE.ORG